

2025

PRODUCT CATALOG



A close-up, shallow depth-of-field photograph of a white Speed Queen washing machine. The control panel, featuring several silver knobs and buttons, is visible in the background but out of focus. In the foreground, three wooden clothespins are resting on the white surface of the machine. Two clothespins are stacked together, and a third one lies in front of them. Each clothespin has the 'SPEED QUEEN' logo printed on it in a stylized font. The lighting is soft and even, highlighting the textures of the wood and the clean surface of the appliance.

**BUILT BETTER
TO LAST LONGER.®**

The world's most reliable laundry equipment
from Ripon, Wisconsin since 1908.

CONTENTS

2025 SPEED QUEEN® CONSUMER PRODUCT CATALOG

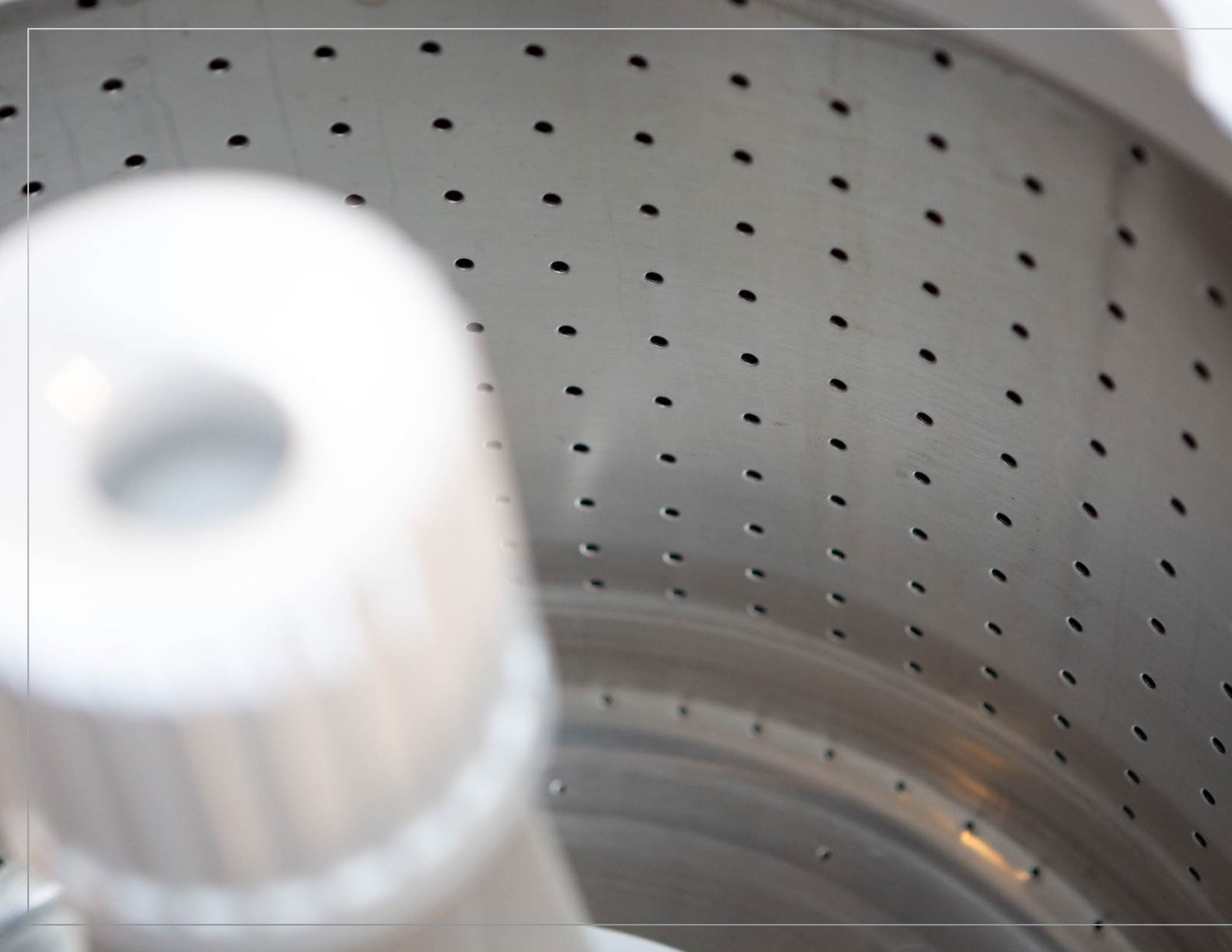
American Quality	04
Product Code Key	06
Product Overview	08
TR & DR Series	10
TC5 & DC5 Pair	16
FF7 & DF7 Pair	20
SF7 Stacked	24

AMERICAN QUALITY

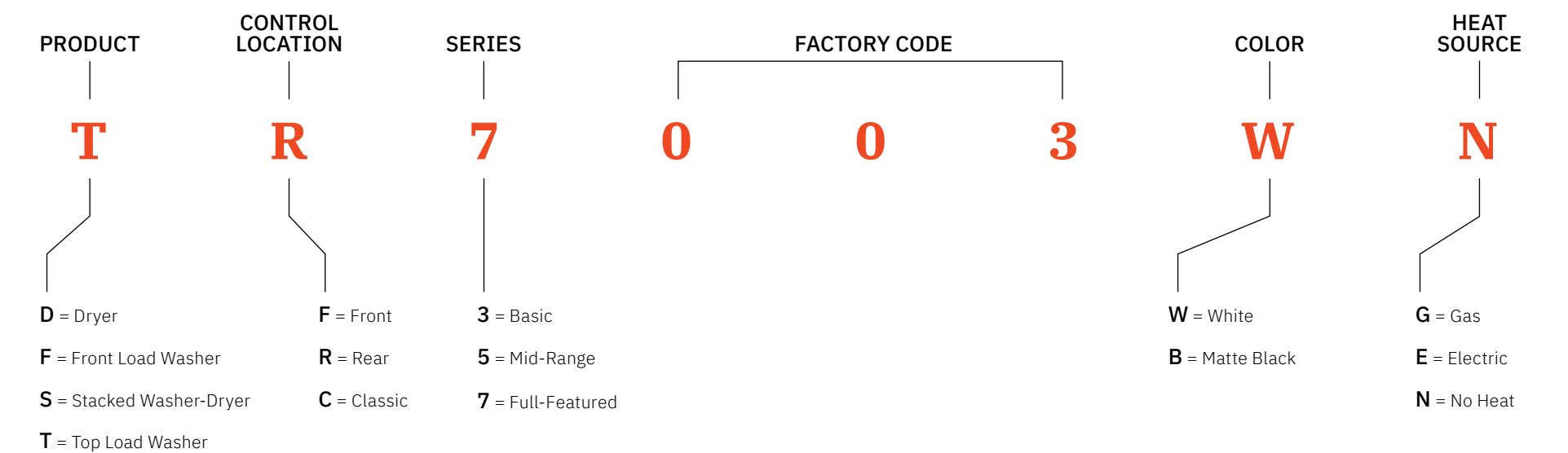
More than 115 years ago, a laundry legend was born in Ripon, Wisconsin. Today, that legend lives on in the same small town. Speed Queen® consumer laundry products are expertly engineered to deliver commercial performance, tested to ensure ultimate durability and manufactured with American Pride.

Our products are tested to 10,400 cycles or roughly 25 years of reliable operation in the average home. That reliability is the direct result of our unwavering commitment to quality materials, components and construction. Commercial quality is part of our DNA and the reason Speed Queen products are the choice of laundromats around the world.





PRODUCT CODE KEY



The first three characters will be used in marketing materials for consumers, while product orders will utilize all 8 characters. For example:

TOP LOAD WASHER LINE	
CONSUMER First Three Characters	PRODUCT ORDERS Full Product Code
TR3	TR3003WN
TR5	TR5003WN
TR7	TR7003WN
TC5	TC5003WN

PRODUCT OVERVIEW

Whether your customers require a fabric care specialist, like our TR series or a classic wash as delivered from our TC5, Speed Queen has them covered. For those looking to reduce water consumption, our front-load washer is fast and efficient, while the stack version is perfect for those with laundries short on space. Best of all, all our pairs now boast the ability to sanitize —something no other brand can claim.

TR7 & DR7 Pair (White)



TR7 & DR7 Pair (Matte Black)



TR5 & DR5 Pair



TR3 & DR3 Pair



TC5 & DC5 Pair (White)



TC5 & DC5 Pair (Matte Black)



PRODUCT OVERVIEW *(continued)*

FF7 & DF7 Pair (White)



FF7 & DF7 Pair (Matte Black)



SF7 Stacked Unit (White & Matte Black)



TR | DR SERIES

The TR range of top load washers and matching DR dryers are fabric care specialists, washing all fabric types, from delicates to the toughest work or outer wear. Speed Queen Perfect Wash™ system produces a tailored approach to fabric care to protect your customers' clothes. They also boast an ultra-quiet agitation cycle at 43 dB. DR dryers complete this one-two fabric care punch with a range of options, including special pet care cycles, a sanitize option and steam.

TR7 | DR7

TR5 | DR5

TR3 | DR3





TR7 | DR7

TR7003WN (White)
TR7003BN (Matte Black)

Speed Queen Perfect Wash™	YES
Water Temperature Selections	4
Load Size Selections	4
Soil Level Selections	4
Pre-Programmed Cycles	8
Special Cycles	8
Save up to 9 Favorite Cycles	YES
Pre-Wash	YES
Delay Start	YES
Signal	YES
Matching Dryer	DR7
Tub Size	3.2 CU FT
Warranty	7 YEARS

AWNE9RSN116TW01 AWNE9RSN116TB01

UPC:
810084500026 810084500606



(White) DR7004WG (Matte Black) DR7004BG
(White) DR7004WE (Matte Black) DR7004BE

YES	Pet Plus™ Pet Items Cycle
YES	Pet Plus™ Hair Removal Cycle
YES	Eco Dry
YES	Steam Boost & Steam Refresh
YES	Steam Sanitize
YES	Moisture Sensing
4	Temperature Selections
10	Pre-Programmed Cycles
YES	Reversible Door
YES	Cylinder Light
YES	Anti-static
YES	End of cycle signal
YES	Commercial Cool-Down technology
YES	Save up to 9 Favorite Cycles
YES	Extended Tumble
YES	ENERGY STAR® Certified
TR7	Matching Washer
7.0 CU FT	Cylinder Size
7 YEARS	Warranty

ADGE9RYS118TW01 ADGE9RYS118TB01
ADEE9RYS178TW01 ADEE9RYS178TB01

UPC:
810084500156 810084500620
810084500149 810084500613



TR7 White Control Panel



DR7 White Control Panel



TR7 Matte Black Control Panel



DR7 Matte Black Control Panel

TR5 | DR5

TR5003WN

Speed Queen Perfect Wash™	YES
Water Temperature Selections	4
Load Size Selections	3
Soil Level Selections	2
Pre-Programmed Cycles	6
Special Cycles	–
Save up to 9 Favorite Cycles	–
Pre-Wash	–
Delay Start	–
Signal	YES
Matching Dryer	DR5
Tub Size	3.2 CU FT
Warranty	5 YEARS

AWN63RSN116TW01

UPC:
810084500019

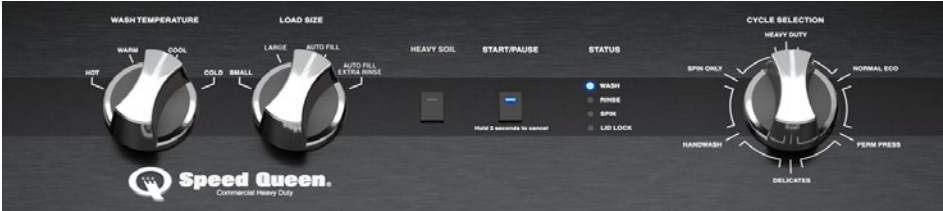
DR5004WG
DR5004WE

–	Pet Plus™
YES	Steam Boost & Steam Refresh
YES	Sanitize
YES	Moisture Sensing
5	Temperature Selections
9	Pre-Programmed Cycles
–	Save up to 9 Favorite Cycles
YES	Extended Tumble
YES	ENERGY STAR® Certified
YES	Signal
TR5	Matching Washer
7.0 CU FT	Cylinder Size
5 YEARS	Warranty

ADG6HRY5118TW01

ADE6HRY5178TW01

UPC:
810084500132
810084500125



TR5 Control Panel



DR5 Control Panel

TR3 | DR3

TR3003WN

Speed Queen Perfect Wash™	YES
Water Temperature Selections	3
Load Size Selections	3
Soil Level Selections	2
Pre-Programmed Cycles	4
Special Cycles	–
Save up to 9 Favorite Cycles	–
Pre-Wash	–
Delay Start	–
Signal	YES
Matching Dryer	DR3
Tub Size	3.2 CU FT
Warranty	3 YEARS

AWN43RSN116TW01

UPC:
810084500019

DR3004WG
DR3004WE

–	Pet Plus™
–	Steam Boost & Steam Refresh
YES	Sanitize
YES	Moisture Sensing
3	Temperature Selections
4	Pre-Programmed Cycles
–	Save up to 9 Favorite Cycles
YES	Extended Tumble
–	ENERGY STAR® Certified
–	Signal
TR3	Matching Washer
7.0 CU FT	Cylinder Size
3 YEARS	Warranty

ADG4FRGS117TW01

ADE4FRGS177TW01

UPC:
810084500774
810084500767



TR3 Control Panel



DR3 Control Panel

TC | DC SERIES

When fast cycles and no lid lock are important, the TC5 delivers. Add in the sanitize capabilities and Pet Plus™ pet hair removal cycle of the matching DC5 dryer, and laundry day will be a breeze.

TC5 | DC5





TC5 | DC5

TC5003WN (White)
TC5003BN (Matte Black)

Speed Queen Classic Clean™	YES
Water Temperature Selections	4
Load Size Selections	2
Soil Level Selections	2
Pre-Programmed Cycles	6
Special Cycles	–
Save up to 9 Favorite Cycles	–
Pre-Wash	–
Delay Start	–
Signal	YES
Matching Dryer	DC5
Tub Size	3.2 CU FT
Warranty	5 YEARS

AWN632SP116TW02 AWN632SP116TB02

UPC:
810084500033 810084500750



(White) DC5004WG (Matte Black) DC5004BG
(White) DC5004WE (Matte Black) DC5004BE

YES	Pet Plus™
YES	Steam Boost & Steam Refresh
YES	Sanitize
YES	Moisture Sensing
4	Temperature Selections
6	Pre-Programmed Cycles
–	Save up to 9 Favorite Cycles
YES	Extended Tumble
–	ENERGY STAR® Certified
YES	Signal
TC5	Matching Washer
7.0 CU FT	Cylinder Size
5 YEARS	Warranty

ADG6ARYS117TW01 ADG6ARYS117TB01
ADE6ARYS177TW01 ADE6ARYS177TB01

UPC:
810084500798 810084500873
810084500781 810084500804



TC5 White Control Panel



DC5 White Control Panel



TC5 Matte Black Control Panel



DC5 Matte Black Control Panel

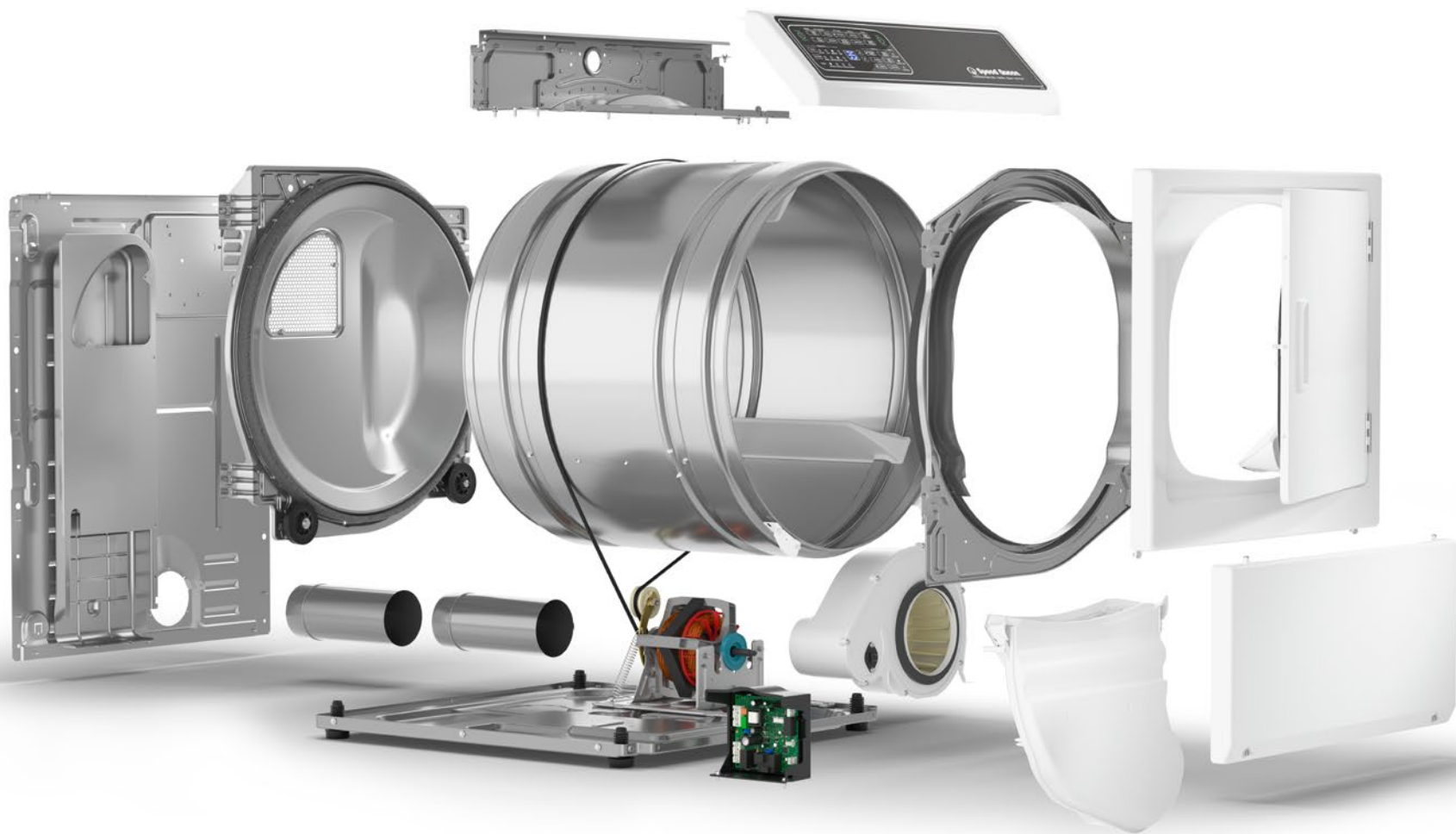
FF | DF | SF SERIES

Quiet operation, fast cycle times and efficient performance, Speed Queen front load washers have it all, and with our legendary reliability as well. Dedicated Pet Plus™ cycles and a flea removal cycle make this set a game changer for pet owners. In addition, a stacked option helps make this set an option where space is at a premium.

FF7 | DF7

SF7





FF7 | DF7

FF7009WN (White)

FF7009BN (Matte Black)

FF7010WN (White)
(Right Hinged)

FF7010BN (Matte Black)
(Right Hinged)

Pet Plus™ Flea Cycle	YES
Tub Clean Cycle	YES
Water Temperature Selections	4
Spin Speed Selections	4
Soil Level Selections	4
Pre-Programmed Cycles	11
Extra Rinse(s)	3
Pre-wash	YES
Quick Wash	YES
Soak	YES
Sanitize with Oxi	YES
Stain Boost	YES
Bedding Cycle	YES
Delay Start & Control Lock	YES
End of Cycle Signal	YES
Matching Dryer	DF7
Tub Size	3.5 CU FT
Warranty	5 YEARS

AFNE9BSP117TW13

AFNE9BSP117TB13

AFNE9BSP117TW01

AFNE9BSP117TB01

UPC:

810084500187

810084500637

810084500194

810084500644

Pedestals sold separately

White Pedestal Part Number: PDR108W

Matte Black Pedestal Part Number: PDR108B



(White) **DF7004WG**
(White) **DF7004WE**

(Matte Black) **DF7004BG**
(Matte Black) **DF7004BE**

YES	Pet Plus™ Hair Removal Cycle
YES	Pet Plus™ Pet Items Cycle
YES	Steam Boost & Steam Refresh
YES	Steam Sanitize
YES	Moisture Sensing
4	Temperature Selections
10	Pre-Programmed Cycles
YES	Reversible Door
YES	Cylinder Light
YES	Save up to 9 Favorite Cycles
YES	Anti-Static
YES	Extended Tumble
YES	Eco Dry
YES	Commercial Cool-Down Technology
YES	ENERGY STAR® Certified
YES	End of Cycle Signal
FF7	Matching Washer
7.0 CU FT	Cylinder Size
5 YEARS	Warranty

ADGE9BYS118TW01

ADGE9BYS118TB01

ADEE9BYS178TW01

ADEE9BYS178TB01

UPC:

810084500231

810084500668

810084500224

810084500651



FF7 Control Panel



DF7 Control Panel



SF7

SF7007WG (White)

SF7007BG (Matte Black)

SF7007WE (White)

SF7007BE (Matte Black)

WASHER

Pet Plus™ Flea Cycle	YES
Tub Clean Cycle	YES
Water Temperature Selections	4
Spin Speed Selections	4
Soil Level Selections	4
Pre-Programmed Cycles	11
Extra Rinse(s)	3
Pre-wash	YES
Quick Wash	YES
Soak	YES
Sanitize with Oxi	YES
Stain Boost	YES
Bedding Cycle	YES
Delay Start & Control Lock	YES
End of Cycle Signal	YES
Matching Dryer	DF7
Tub Size	3.5 CU FT
Warranty	5 YEARS

DRYER

YES	Pet Plus™ Hair Removal Cycle
YES	Pet Plus™ Pet Items Cycle
YES	Steam Boost & Steam Refresh
YES	Steam Sanitize
YES	Moisture Sensing
4	Temperature Selections
10	Pre-Programmed Cycles
YES	Reversible Door
YES	Cylinder Light
YES	Save up to 9 Favorite Cycles
YES	Anti-Static
YES	Extended Tumble
YES	Eco Dry
YES	Commercial Cool-Down Technology
YES	ENERGY STAR® Certified
YES	End of Cycle Signal
FF7	Matching Washer
7.0 CU FT	Cylinder Size
5 YEARS	Warranty

ATGE9ASP118TW01

ATGE9ASP118TB01

ATEE9ASP178TW01

ATEE9ASP178TB01

UPC:

810084500286

810084500682

810084500279

810084500675

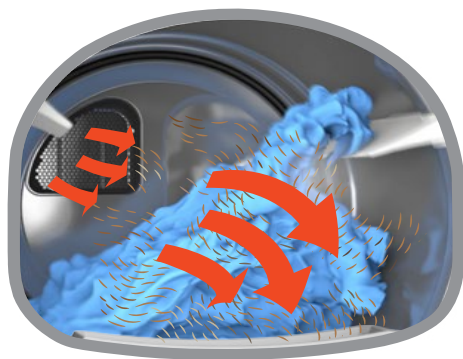




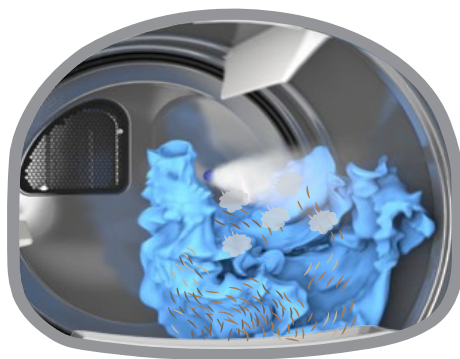
PET HAIR REMOVAL

The science behind it and how it works, in three easy steps

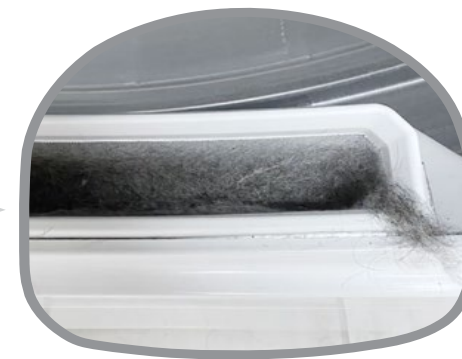
**The Pet Hair Remover cycle is used to remove pet hair from dry items, and it can also be used as a standalone refresh or as a pre-wash cycle before putting items in the washer.*



It's a 10-minute, no heat cycle.
Our axial air flow design is key. It creates a large volume of airflow, moving the air from ***back to front and forcing pet hair into the lint filter.***



By default, the ***anti-static*** option is selected, which adds ***short pulses of steam*** during the last few minutes of the cycle. This helps remove lingering hair from the lifters and cylinder walls, ***driving it into the lint filter.***



Afterwards, make sure to ***clean the lint filter.***

1



DRYER

Add load to your ***DR7, DF7, or DC5*** dryer, select the ***Pet Hair Remover cycle*** and hit start.*

2



WASHER

Add load to your ***TR7, FF7, or TC5*** washer and select the best cycle and options for your items.

3



DRYER

Put the load back into the ***DR7, DF7, or DC5*** dryer and select the ***Pet Items/Pet Hair Remover cycle.*** (customize settings as needed)

